

Since 1994, Kimble Recycling & Disposal, Inc. has provided convenient recycling service to our Eastern Ohio customers. Take a minute to learn about our easy recycling program and what we recycle.

The biggest issue with curbside recycling for all recycling haulers is the large amount of contaminants received within the recycling carts (see pictured). Items such as trash bags, food residue, styrofoam, batteries, electronics, etc. are among the top contaminants and are not accepted at our recycling center.

If your item is not on the approved list please place it directly into the trash. All items should be cleaned and dried before being placed into the cart - unbagged. Together, we can help protect the environment and build a more sustainable future.



## RECYCLING RIGHT - In 3 Easy Steps...

### 1 When in doubt... THROW IT OUT!

Make sure that all items are on the Kimble Recycling Center's approved list of accepted recyclables. If the item is not on the list or if you are unsure place it directly into the trash.

### 2 Recyclables must be clean and dry.

Food is considered a contaminate. No dirty peanut butter jars or bottles with water still in them. Cardboard must also be clean and dry. Greasy pizza boxes are not recyclable.

### 3 No need to sort or bag your items

Place your approved recyclables in your Kimble Recycling Cart all together. Items should be loose and unbagged. Bags are a contaminate at our Recycling Center.

## WILLOWICK RECYCLING COLLECTION CALENDAR

S	M	T	W	R	F	S
FEBRUARY 2019						
			1	2		
3	4	5	6	7	8	9
10	11	12	13	14	15	16
17	18	19	20	21	22	23
24	25	26	27	28		

S	M	T	W	R	F	S
MARCH 2019						
			1	2		
3	4	5	6	7	8	9
10	11	12	13	14	15	16
17	18	19	20	21	22	23
24	25	26	27	28	29	30
						31

S	M	T	W	R	F	S
APRIL 2019						
			1	2	3	4
			5	6		
7	8	9	10	11	12	13
14	15	16	17	18	19	20
21	22	23	24	25	26	27
28	29	30				

S	M	T	W	R	F	S
MAY 2019						
			1	2	3	4
5	6	7	8	9	10	11
12	13	14	15	16	17	18
19	20	21	22	23	24	25
26	27	28	29	30	31	

S	M	T	W	R	F	S
JUNE 2019						
						1
2	3	4	5	6	7	8
9	10	11	12	13	14	15
16	17	18	19	20	21	22
23	24	25	26	27	28	29
						30

S	M	T	W	R	F	S
JULY 2019						
			1	2	3	4
			5	6	7	8
9	10	11	12	13	14	15
16	17	18	19	20	21	22
23	24	25	26	27	28	29
30	31					

S	M	T	W	R	F	S
AUGUST 2019						
			1	2	3	
4	5	6	7	8	9	10
11	12	13	14	15	16	17
18	19	20	21	22	23	24
25	26	27	28	29	30	31

S	M	T	W	R	F	S
SEPTEMBER 2019						
			1	2	3	4
			5	6	7	
8	9	10	11	12	13	14
15	16	17	18	19	20	21
22	23	24	25	26	27	28
29	30					

S	M	T	W	R	F	S
OCTOBER 2019						
			1	2	3	4
			5			
6	7	8	9	10	11	12
13	14	15	16	17	18	19
20	21	22	23	24	25	26
27	28	29	30	31		

S	M	T	W	R	F	S
NOVEMBER 2019						
						1
						2
3	4	5	6	7	8	9
10	11	12	13	14	15	16
17	18	19	20	21	22	23
24	25	26	27	28	29	30

S	M	T	W	R	F	S
DECEMBER 2019						
			1	2	3	4
			5	6	7	
8	9	10	11	12	13	14
15	16	17	18	19	20	21
22	23	24	25	26	27	28
29	30	31				

S	M	T	W	R	F	S
JANUARY 2020						
			1	2	3	4
5	6	7	8	9	10	11
12	13	14	15	16	17	18
19	20	21	22	23	24	25
26	27	28	29	30	31	

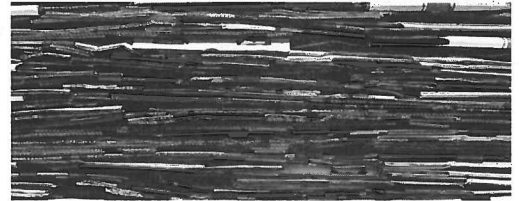
## PAPER & NEWSPAPER

Paper should be clean and dry. Please no glossy paper or foil wrapping paper. Paper should not be stained by waste. Magazines, mail, newspapers and copier paper are accepted..



## CARDBOARD

Cardboard must be clean and dry. It should be flattened and be emptied of any packing materials. No food contamination such as grease on pizza boxes.



## METAL AND ALUMINUM CANS

Only metal or aluminum food and drink cans are accepted. They should be empty, clean and dry before being placed loosely in the recycling cart. No other metal items are accepted.



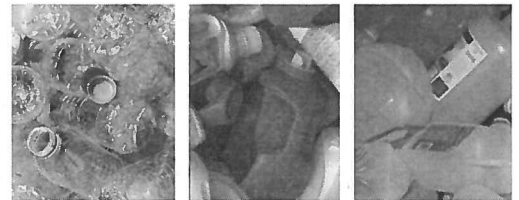
## GLASS BOTTLES

All glass bottles should be empty, clean and dry before being placed loosely in the recycling cart. Please no glassware, mirrors, window panes or light bulbs.



## PLASTICS JUGS & BOTTLES

Only clean and empty plastic bottles and jugs are accepted. Please do not crush the bottles and keep lids on. No other plastic items are accepted - even if they have a recycle logo.



## NOT ACCEPTED

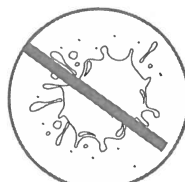
- WOOD
- BATTERIES
- WIRE HANGERS
- TOYS
- PAINT CANS
- LIGHT BULBS
- PLASTIC BAGS
- PLASTIC UTENSILS
- ANTI-FREEZE
- MOTOR OIL CONTAINERS
- STYROFOAM
- PLASTIC FURNITURE
- WAX CARTONS
- HOSES
- CHRISTMAS LIGHTS
- YARD WASTE



NO  
PLASTIC BAGS



NO  
GARBAGE



NO  
FOOD OR LIQUIDS



NO  
CLOTHING



NO  
HOSES/WIRES/CHAINS



NO  
ELECTRONICS

# KIMBLE RECYCLING & DISPOSAL

PO BOX 448  
DOVER, OHIO 44622  
(800) 201-0005  
WWW.KIMBLECOMPANIES.COM

## HOLIDAY SCHEDULE

Kimble Companies offers our holiday schedule for waste removal so you know how holidays will affect your pick up. Please take a look at your trash removal schedule below.

### **New Year's Day - January 1, 2019**

No service on this day.

Tuesday - Friday service will be delayed by one day.

### **Memorial Day - May 27, 2019**

No service on this day.

Monday - Friday service will be delayed by one day.

### **Independence Day - July 4, 2019**

No service on this day.

Thursday - Friday service will be delayed by one day.

### **Labor Day - September 2, 2019**

No service on this day.

Monday - Friday service will be delayed by one day.

### **Thanksgiving - November 28, 2019**

No service on this day.

Thursday - Friday service will be delayed by one day.

### **Christmas - December 25, 2019**

No service on this day.

Wednesday - Friday service will be delayed by one day.



## LIVE CHAT TODAY!

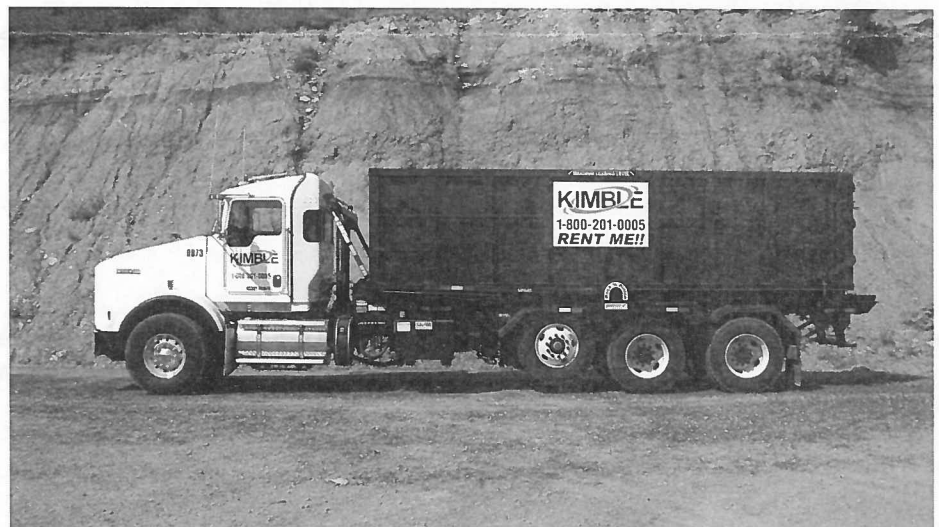
Avoid long hold times! Our newest feature allows our customers to start a live chat with a Kimble Customer Service team member via our website at [www.kimblecompanies.com](http://www.kimblecompanies.com). As we understand our customer's time is valuable, we have Live Chat Agents ready to assist you during peak hours. This will provide an immediate line of communication to get customer's questions answered without picking up the telephone. We are continuing to enhance ways that we can best service our customers! We look forward to servicing you via Live Chat at [www.kimblecompanies.com](http://www.kimblecompanies.com). Look for Chat in the lower right hand corner!

## INCLEMENT WEATHER

As the winter season approaches, we thank you in advance for your patience in the event of any delays as we work to service your area! Service Alerts can be found on our website at [www.kimblecompanies.com](http://www.kimblecompanies.com)

## RENT A ROLL OFF!

Get a roll off container delivered to you! Clean out your garage, get ready for holiday decorations, or make room to park your car inside for the winter! We have a variety of container sizes including 12, 20, 30, and 40 yards. Visit [www.kimblecompanies.com](http://www.kimblecompanies.com) to see size and dimensions of dumpster rentals, Live Chat with Customer Service or call Temporary Roll Offs at 800-201-0005 extension 9407.



**KEEP THE ROLL OFF TO USE FOR ONE WEEK!\***

\*One FLAT RATE subject to size, weight restrictions, and additional charges may apply if container is kept for more than allotted 7 days.

# Auto Credit Card Payment Form

Customer Account # \_\_\_\_\_

Dear Valued Customer,

The Auto-Pay system provides a secure method of processing credit card payments as well as storing your credit card number and CVV information in an encrypted format that keeps the data confidential and inaccessible even by our staff. If you would like to enroll in Auto Pay, the following information will need to be completed and returned to Kimble Recycling & Disposal, Inc. ("Kimble").

**PLEASE NOTE: Your card will be processed around the first of the month before we invoice each billing cycle. NO invoices for your account will be sent to you unless you check the box below and provide an email address.**

Send me electronic invoices paid with Auto Pay to the following email: \_\_\_\_\_

If at any time in the future you desire to cancel this Auto-Pay authorization, we request that you send written confirmation at least seven (7) days before your billing cycle. This authorization will remain valid for a period of seven (7) days after your written notice of cancellation. **Please also note if your card expires and you do not provide an updated card, you will receive a paper invoice and will need to submit payment thereafter.**

By signing below you authorize Kimble: to maintain on file your supplied credit card information; to charge your credit card for all sums owed to Kimble for services rendered to you, from time to time, including without limitation all recurring charges, non-recurring charges, late fees, and damages; you represent that you have the authority to authorize the charges set forth above; and you agree to Kimble's Terms and Conditions on the reverse side of this form.

**Signature (required):** \_\_\_\_\_ **Date:** \_\_\_\_\_

**PrintName:** \_\_\_\_\_

If you have any questions, please feel free to contact Accounts Receivable at 1-800-201-0005 ext. 9400.

Visa \_\_\_\_\_ Mastercard \_\_\_\_\_ Discover \_\_\_\_\_

**Name on Card:** \_\_\_\_\_

**Billing Address:** \_\_\_\_\_

**Expiration Date:** \_\_\_\_\_

---

\*Kimble staff - destroy information below this line before imaging\*

**Credit Card #:** \_\_\_\_\_

**CVV/Last 3 Digits on Back of Card:** \_\_\_\_\_

*Note: All information MUST be completed in order to process your card.*

Rev. 8.13.18

